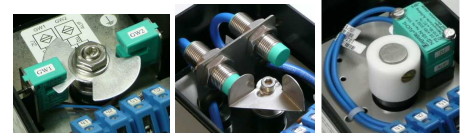
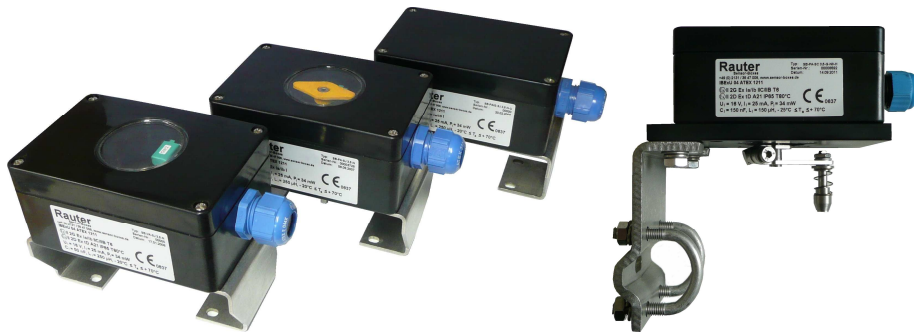


RAUTER

Sensor-Boxes

Ex 8V vestamide limit switch boxes for zone 1, 2 + 21, 22



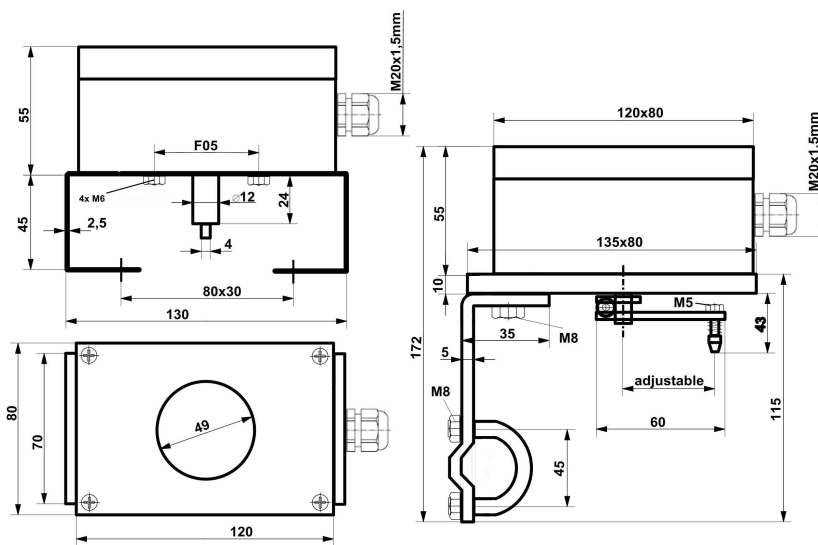
Pepperl+Fuchs limit switches

technical data limit switch boxes

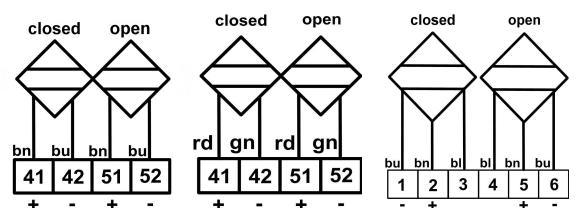
ATEX identification	II2G Ex ia/ib IIC/IIB T6 II2D Ex ia/ib IIIC T80°C
temperature range	- 25°C ≤ T _a ≤ + 70°C
protection class	IP 65
material housing	PA = polyamide black, R _o ≤ 10 ⁹ Ω, RAL 9005
dimensions housing	120x80x55mm
cable gland	M20x1,5mm plastic blue/black, Ø 13-5,5 mm
weight without bracket	0,3 kg
options	<ul style="list-style-type: none"> - cover with window or closed cover - 2D indicator yellow - membrane vent for avoidance of condensation water - Harting connection = rapid changing the box
bracket connection	F05 slot
actuator connection	<ul style="list-style-type: none"> - acc. to VDI/VDE 3845, steam high: 20, 30 and 50mm, hole spacings 80x30 and 130x30 mm - mounting set f. linear actuators acc. to IEC 534

technical data limit switches

Pepperl+Fuchs sensor types	<ol style="list-style-type: none"> 1) SJ 3,5-N 2) SC 3,5-N0 3) NJ2-12GK-N 4) NJ 2-V3-N 5) SJ 3,5-SN, NJ2-12GK-SN 6) SJ 3,5-S1N, NJ3-18GK-S1N
nominal voltage	8V DC
nominal current 1)-5)	detected ≤ 1mA / undetected ≥ 3mA
nominal current 6)	detected ≥ 3mA / undetected ≤ 1mA
switching range	0° + 90°, 0° + 180° or adjustable
output wire	2-wire 1)-6), 3-wire NJ3-18GK-S1N
switching function	NC 1)-5), NO 6)
output polarity	NAMUR 1)-4) safety function 5)-6)
acc. to IEC 61508	usable up to SIL2 1)-4), SIL3 5)-6)



dimensions



wiring diagrams: left general, middle SJ 3,5-S1N and right NJ3-18GK-S1N