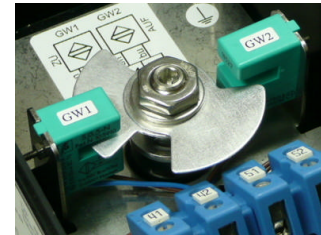
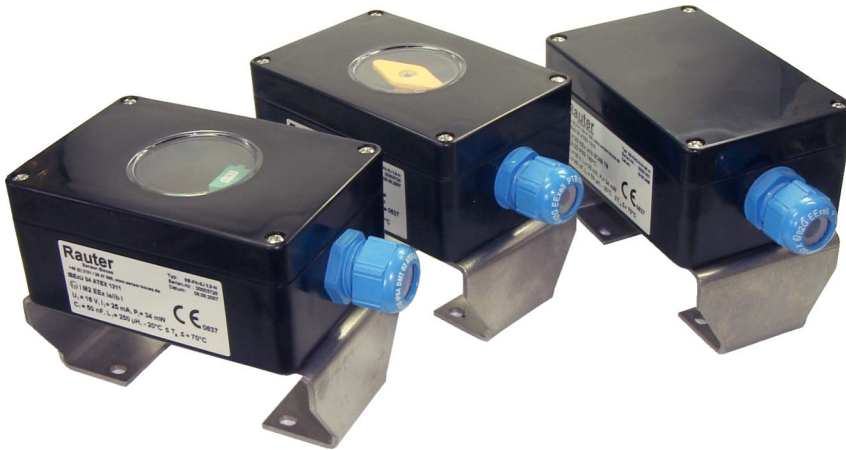


RAUTER

Sensor-Boxes

Ex 8V limit switch boxes for mining



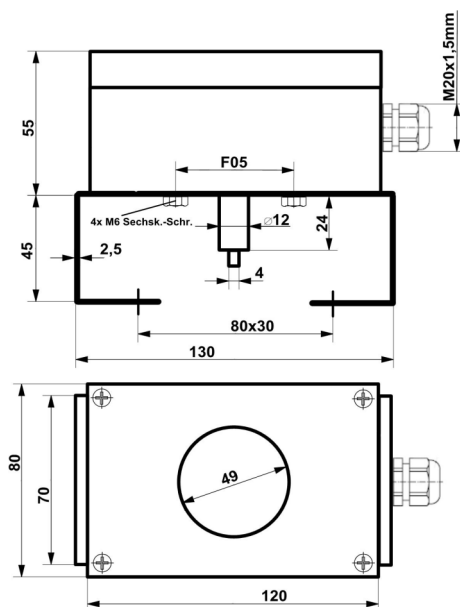
Pepperl+Fuchs SJ 3,5-N

technical data limit switch boxes

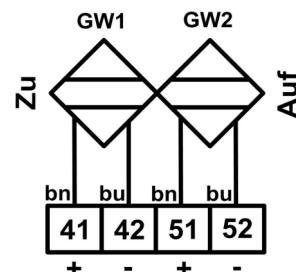
| | |
|------------------------|---|
| ATEX indentication | ⚠ I M2 Ex ia I |
| temperature range | - 25°C ≤ T _a ≤ + 70°C |
| material housing | PA = polyamide black, R _o ≤ 10 ⁹ Ω, RAL 9005 |
| dimensions housing | 120x80x55mm |
| cable gland | M20x1,5mm plastic blue/black, Ø 13-5,5 mm |
| weight without bracket | 0,3 kg |
| options | - cover with window or closed cover - 2D-indicator yellow |
| bracket connection | F05-slot |
| actuator connection | acc. to VDI/DE 3845, steam high: 20, 30 and 50mm, for hole spacings 80x30 mm and 130x30 mm |

technical data sensors

| | |
|---------------------|------------------------------------|
| sensor type | Pepperl+Fuchs SJ 3,5-N |
| nominal voltage | 8V DC |
| nominal current | detected ≤ 1mA / undetected ≥ 3mA |
| switching frequency | 0 ... 3000Hz |
| switching range | 0° u. 90°, 0° + 180° or adjustable |
| output wire | 2-wire |
| switching function | NAMUR normally closed = NC |
| output polarity | NAMUR |
| Acc. to IEC 61508 | usable up to SIL2 |



dimensions



wiring diagram