

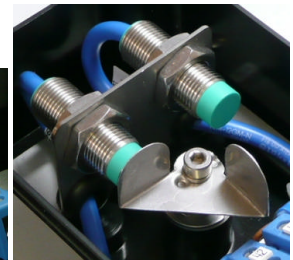
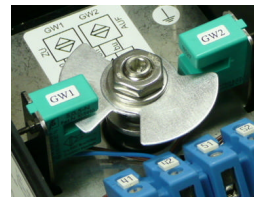
# RAUTER

Sensor-Boxes

Ex 8V limit switch box with membrane vent for zone 1, 2 + 21, 22



**Membrane vent:** for avoidance of condensation water



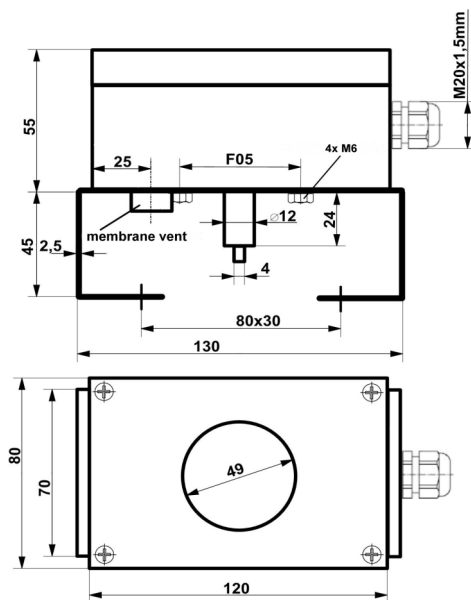
**Pepperl+Fuchs sensors**

## technical data limit switch box

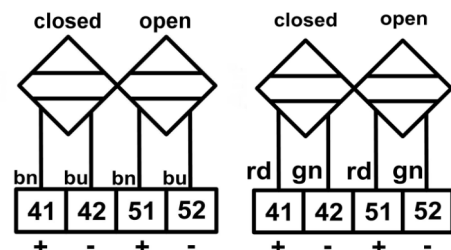
ATEX identification	II2G Ex ia/ib IIC/IIB T6 II2D Ex tD A21 IP65 T80°C
temperature range	- 25°C ≤ T <sub>a</sub> ≤ + 70°C
protection class	IP 65
material housing	PA = polyamide black, R <sub>0</sub> ≤ 10 <sup>9</sup> Ω, RAL 9005
dimensions housing	120x80x55mm
cable gland	M20x1,5mm plastic blue/black, Ø 13-5,5 mm
weight without bracket	0,3 kg
options	- cover with window or closed cover - 2D indicator, yellow
bracket connection	F05 slot
actuator connection	acc. to VDI/VDE 3845, steam high: 20, 30 and 50mm, hole spacing 80x30mm and 130x30mm

## technical data limit switches

Pepperl+Fuchs sensor types:	1) SJ 3,5-N 2) SC 3,5-N0 3) NJ2-12GK-N 4) SJ 3,5-SN, NJ2-12GK-SN 5) SJ 3,5-S1N
nominal voltage	8V DC
nominal current 1)-4)	detected ≤ 1mA / undetected ≥ 3mA
nominal current 5)	detected ≥ 3mA / undetected ≤ 1mA
switching function	0° + 90°, 0° + 180° or adjustable
output wire	2-wire 1)-5)
switching function	NC 1)-4), NO 5)
output polarity	NAMUR 1)-3) safety function 4)-5)
acc. to IEC 61508	usable up to SIL2 1)-3), SIL3 4)-5)



**dimensions**



**wiring diagrams:** left general, right SJ 3,5-S1N