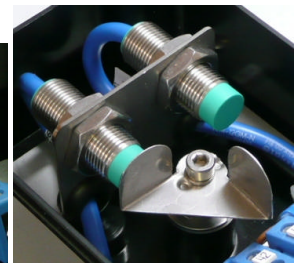
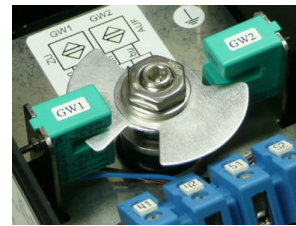
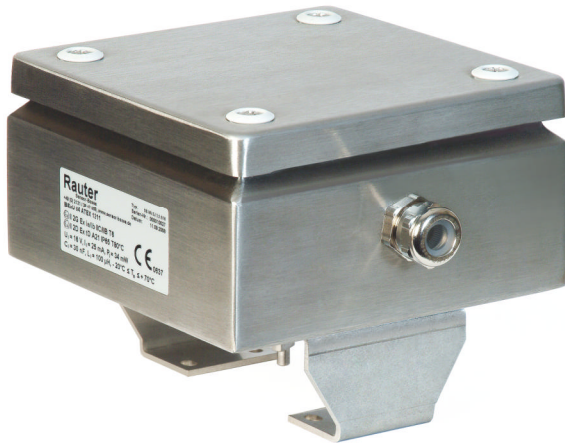


RAUTER

Sensor-Boxes

Ex 8V box, offshore limit switch box for zone 1, 2 + 21, 22



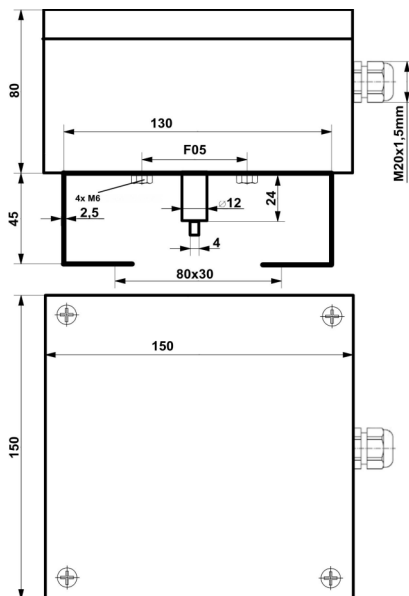
Pepperl+Fuchs limit switches

technical data limit switch box

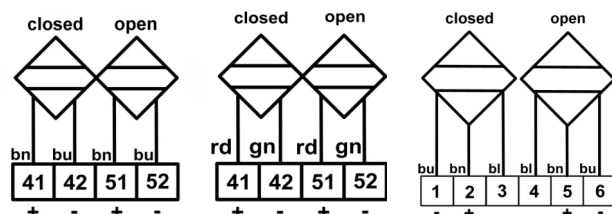
ATEX identification	II2G Ex ia/ib IIC/IIB T6 II2D Ex tD A21 IP65 T80°C
temperature range	- 25°C ≤ T _a ≤ + 70°C
protection class	IP 65
material housing	stainless steel 304 (1.4301 = A2)
dimensions housing	150x150x80mm
cable gland	M20x1,5mm, Ms or A2, Ø 13-9,0mm
weight without bracket	1,8 kg
options	- membrane vent for avoidance of condensation water - stainless steel 316Ti (1.4571 =A4)
bracket connection	F05 slot
actuator connection	acc. to VDI/VDE 3845, steam high: 20, 30 and 50mm, for hole spacings 80x30 and 130x30 mm

technical data limit switches

Pepperl+Fuchs sensor types	1) SJ 3,5-N 2) SC 3,5-N0 3) NJ2-12GK-N 4) SJ 3,5-SN, NJ2-12GK-SN 5) SJ 3,5-S1N, NJ3-18GK-S1N
nominal voltage	8V DC
nominal current 1)-4)	detected ≤ 1mA / undetected ≥ 3mA
nominal current 5)	detected ≥ 3mA / undetected ≤ 1mA
switching range	0° + 90°, 0° + 180° or adjustable
output wire	2-wire 1)-5), 3-wire NJ3-18GK-S1N
switching function	NAMUR NC 1)-4), NAMUR NO 5)
output polarity	NAMUR 1)-3) safety function 4)-5)
acc. to IEC 61508	usable up to SIL2 1)-3), SIL3 4)-5)



dimensions



wiring diagram: left general, centre SJ 3,5-S1N and right NJ3-18GK-S1N