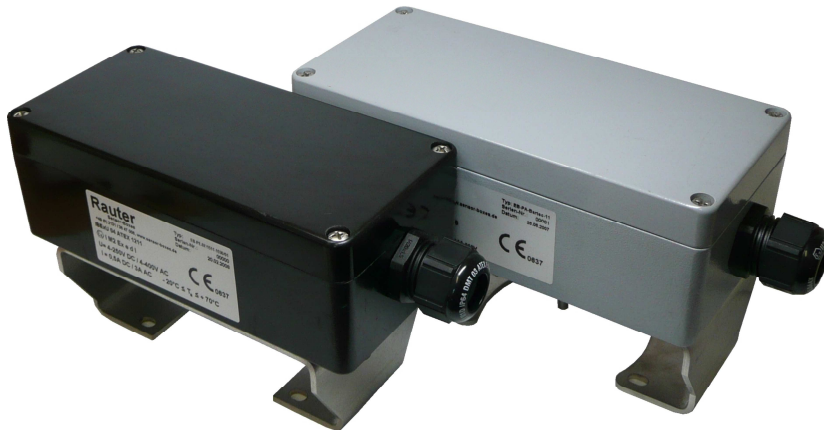


# RAUTER

Sensor-Boxes

Ex 4-250V limit switch boxes for zone 1, 2 + 21, 22



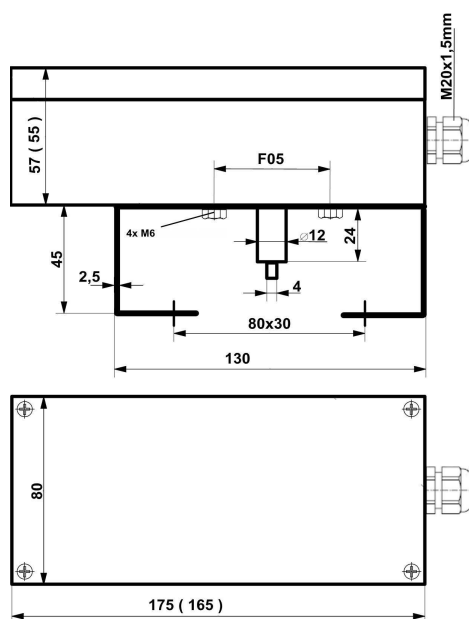
Bartec limit switches

## technical data limit switch boxes

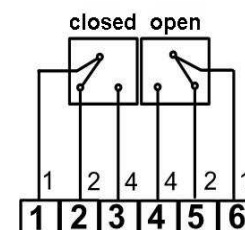
ATEX identification	II 2G Ex ed IIC T6 Gb II 2D Ex t IIIC T 80°C Db
temperature range	- 20°C ≤ T <sub>a</sub> ≤ + 70°C
protection class	IP 65
material housing	- PE = polyester black, R <sub>o</sub> ≤ 10 <sup>9</sup> Ω, RAL 9005 - AL = aluminium = ALSi-12, grey RAL 7001
dimensions housing	PE = 165x75x55mm, AL = 175x80x57mm
cable gland	M20x1,5mm plastic black, Ø 13-7,0mm
weight without bracket	0,8 kg PE = 0,66kg, AL = 0,81kg
bracket connection	F05 slot
actuator connection	acc. to VDI/VDE 3845, steam hight 20, 30 and 50mm, hole spacing 80x30 mm u. 130x30mm

## technical data limit switches

limit switch type	Bartec 07/1511-1330/01
voltage	4 - 250V DC/AC
current	0,03 - 7A
max. switching rate	1000 operations / h
switching range	0° + 90°, 0° + 180° or adjustable
output polarity	3-wire
switching function	changer



dimensions



wiring diagram