

RAUTER

Sensor-Boxes

Ex - 55°C box, linear limit switch box for zone 1, 2 + 21, 22



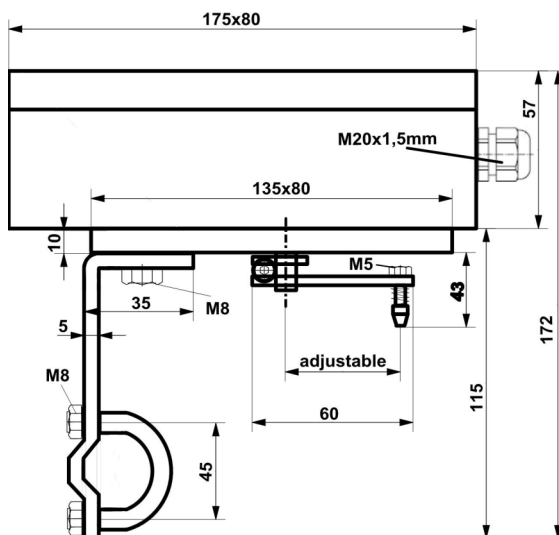
Bartec limit switches

technical data limit switch box

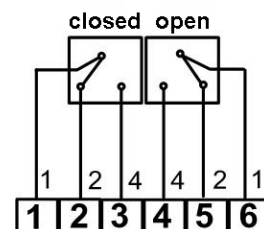
ATEX identification	II 2G Ex ed IIC T6 II 2D Ex tD A21 IP 65 T 80°
temperature range	- 55°C ≤ T _a ≤ + 70°C
protection class	IP 65
material housing	AL = aluminium = ALSi-12, grey RAL 7001
dimensions housing	175x80x57mm
cable gland	M20x1,5mm, Ms or stainless steel, Ø 13-9,0mm
weight without bracket	0,8 kg
bracket connection	F05 slot
actuator connection	mounting set for linear actuators acc. to IEC 534

technical data limit switches

limit switch type	Bartec 07/1511-1330/01
voltage	4 - 250V DC/AC
current	0,03 - 7A
max. switching rate	1000 operations / h
switching range	0° + 90°, 0° + 180° or adjustable
output polarity	3-wire
switching function	changer



dimensions



wiring diagram