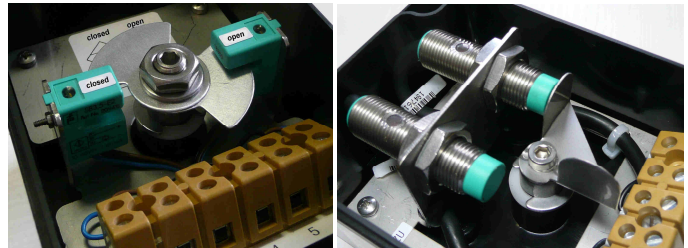


24 V DC inductive limit switch boxes for pneumatic rotary actuators



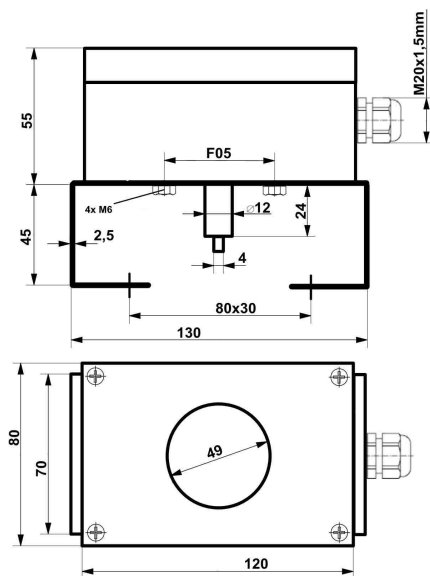
Pepperl+Fuchs sensors: left: 2x adjustable aluminium switching cams, right: 1x stainless steel switching cam 0° and 90°, other switching cams upon request.

technical data limit switch boxes

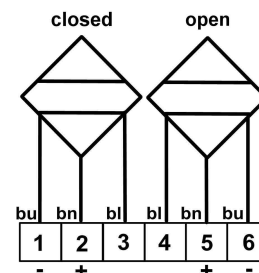
temperature range	- 20°C ≤ T _a ≤ + 70°C
protection class	IP 65
material housing	PA = polyamide black, R _o ≤ 10 ⁹ Ω, RAL 9005
dimensions housing	120x80x55mm
cable gland	M20x1,5mm plastic black, Ø 13-5,5 mm
weight without bracket	0,3kg
options	- cover with window or closed cover - 2D indicator yellow - membrane vent for avoidance of condensation water - Harting connection = rapid changing the box
bracket connection	F05 slot
actuator connection	acc. to VDI/VDE 3845, steam high: 20, 30 and 50mm, hole spacings 80x30mm and 130x30mm

technical data limit switches

sensor-type	SB 3,5-E2 NJ2-12GM40-E2
voltage	24 V DC, 10 - 30 V DC for SB 3,5-E2, 10 - 60 V DC for NJ2-12GM40-E2
current	0 - 100 mA for SB 3,5-E2, 0 - 200 mA for NJ2-12GM40-E2
switching frequency	0 ... 2000 Hz for SB 3,5-E2, 0 ... 3000 Hz for NJ2-12GM40-E2
switching range	0° - 180° adjustable for SB 3,5-E2, 0° + 90° for NJ2-12GM40-E2
output wire	3-wire
switching function	PNP normally open = NO
output polarity	DC



dimensions



wiring diagram