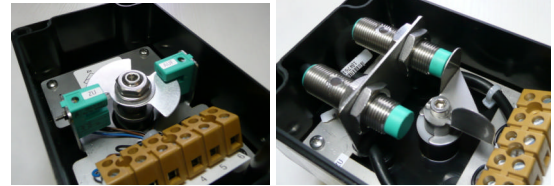
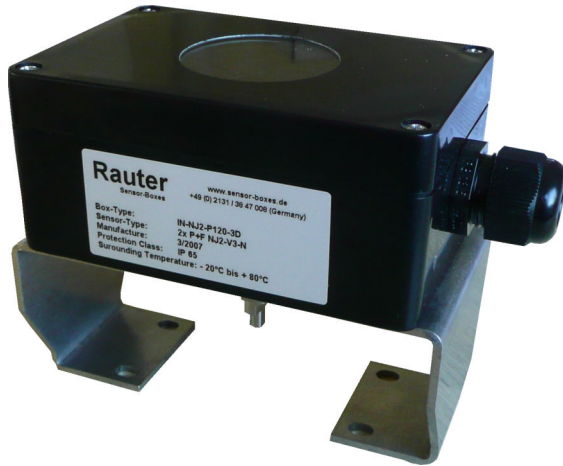


RAUTER

Sensor-Boxes

24V limit switch boxes



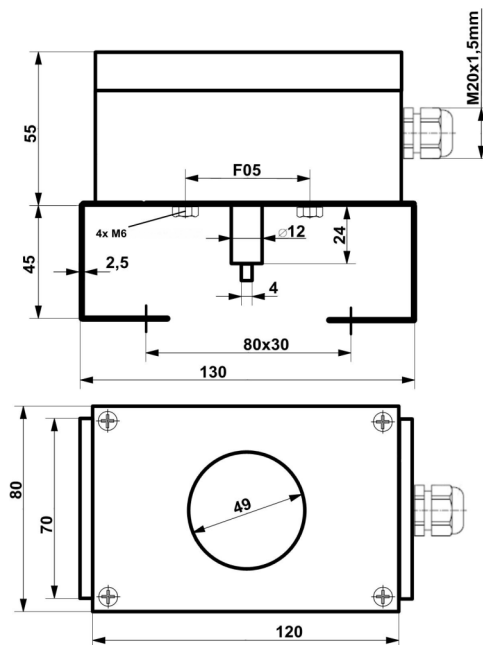
Pepperl+Fuchs sensor types SB 3,5-E2 or NJ2-12GM40-E2

technical data limit switch boxes

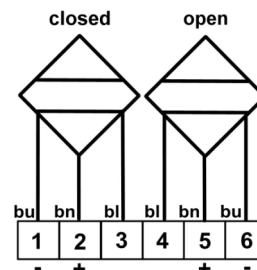
| | |
|------------------------|--|
| temperature range | - 20°C ≤ T _a ≤ + 70°C |
| protection class | IP 65 |
| material housing | PA = polyamide black, R _o ≤ 10 ⁹ Ω, RAL 9005 |
| dimensions housing | 120x80x55mm |
| cable gland | M20x1,5mm plastic black, Ø 13-5,5 mm |
| weight without bracket | 0,3kg |
| options | - cover with window or closed cover - 2D indicator yellow - membrane vent for avoidance of condensation water - Harting connection = rapid changing the box |
| bracket connection | F05 slot |
| actuator connection | acc. to VDI/VDE 3845, steam high: 20, 30 and 50mm, for hole spacings 80x30 and 130x30 mm |

technical data limit switches

| | |
|---------------------|--|
| voltage | 24V DC, 10 - 30V DC for SB 3,5-E2, 10 - 60V DC for NJ2-12GM40-E2 |
| current | 0 - 100 mA for SB 3,5-E2, 0 - 200 mA for NJ2-12GM40-E2 |
| switching frequency | 0 ... 2000 Hz for SB 3,5-E2, 0 ... 3000 Hz for NJ2-12GM40-E2 |
| switching range | 0° - 180° adjustable for SB 3,5-E2, 0° + 90° for NJ2-12GM40-E2 |
| output wire | 3-wire |
| switching function | PNP normally open = NO |
| output polarity | DC |



dimensions



wiring diagram