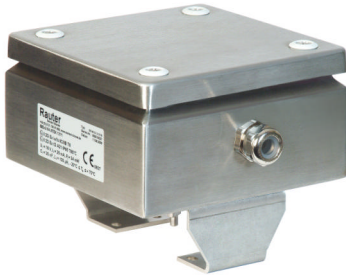


Sonder-Endschalterboxen



8V Offshore-Endschalterbox, Zone 1, 2 + 21, 22

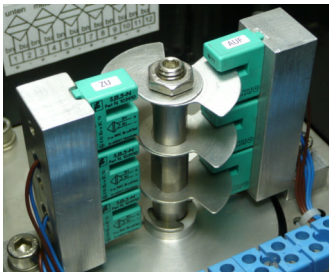


4-250V - 55°C Endschalterbox, Zone 1, 2 + 21, 22

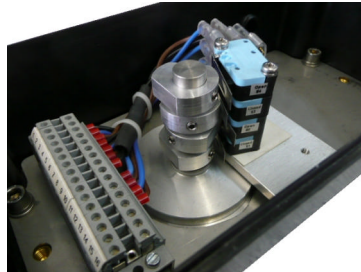
- 55°C



Endschalterbox zur Aufnahme von Stellungsregler



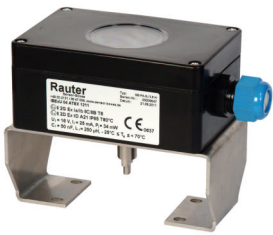
8V Sicherheits-Endschalterbox, 6x P+F SJ 3,5-N, Zone 1, 2 + 21, 22



4-250V, 4x mechn. Crouzet-Endschalter



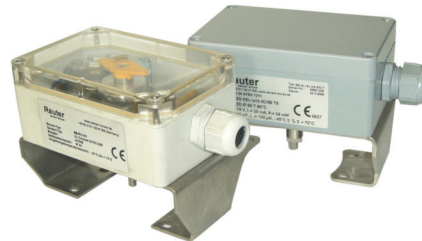
Standard-Endschalterboxen



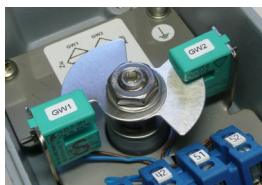
8V Chemie-Endschalterbox für Zone 1, 2 + 21, 22



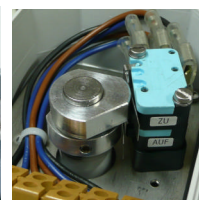
24V und 4-250V Endschalterboxen



Endschalter-Varianten



8V Pepperl+Fuchs induktive Sensoren



4-250V Bartec mechn., 4-250V Crouzet mechn., 24V P+F Sensoren